

Early Bird Offer ~ \$750pp Savings Available*

June Departure Special offer price \$8,995

July Departure Special offer price \$9,245

FLIGHTSEE SOUTH AUSTRALIA'S ICONIC OUTBACK IN STYLE

Aircruise Lake Eyre & Flinders Ranges

6 Days | 7 - 12 Jun 2025 | AUD\$9,745pp twin share | Single Supplement AUD\$895

6 Days | 19 - 24 Jul 2025 | AUD\$9,995pp twin share | Single Supplement AUD\$895

EXCLUSIVE HIGHLIGHTS

- ✦ Enjoy incredible 'flightseeing' of rugged ancient landscapes across the Flinders Ranges, Wilpena Pound, Birdsville, Marree Man^ and Lake Eyre (Kati Thanda)
- ✦ Discover the breathtaking Flinders Ranges including the awe-inspiring Ikara-Flinders Ranges National Park, Old Wilpena Station and the 'Corridor Through Time' featuring Bunyeroo and Brachina Gorges
- ✦ Touring of Birdsville, Simpson Desert National Park (Munga-Thirri National Park) and Port Augusta
- ✦ Stay in iconic Australian Outback locations including the spectacularly set Rawnsley Park Station in the Flinders Ranges and the Birdsville Hotel
- ✦ Enjoy sunset at 'Big Red', the Simpson Desert's largest sand dune
- ✦ Visit the fascinating Wadlata Outback Centre
- ✦ All meals - breakfast, lunch and dinner
- ✦ Enjoy this outback discovery with new friends in the comfort of your own private aircraft
- ✦ Escorted throughout by a dedicated Journey Director

"The entire journey was a totally wonderful experience. Seeing our country from the air was a spectacular highlight."

Patricia Wells, Orange NSW

Join us for a memorable Air Tour of the great Australian Outback from the spectacular Flinders Ranges to the 'Crossroads' of Port Augusta. While 'Flightseeing' in your private aircraft, you will marvel at the sight of the ancient rugged landscapes unfolding below. Take in breathtaking aerial views of The Flinders Ranges, Wilpena Pound, Marree Man^, Lake Eyre South, the Goyder Channel and the Southern end of Lake Eyre North. Incredible aerial Outback vistas unfold as we continue flying North towards the Warburton River as we follow the Diamantina River towards the iconic remote town of Birdsville.

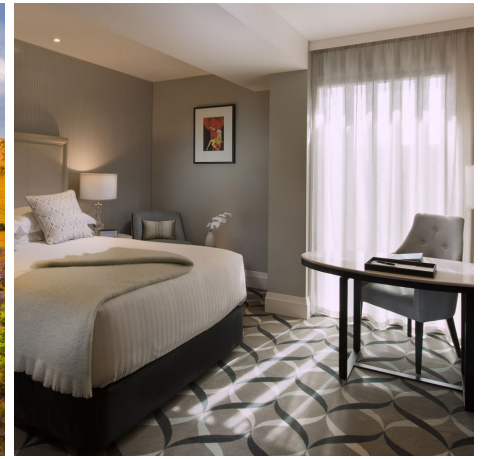
Spend two nights in eco-luxury at Rawnsley Park Station, magnificently set in the Flinders Ranges. With the tremendous flooding of Channel Country in recent years, Lake Eyre (Kati Thanda) underwent a remarkable transformation, a testament to the restorative powers of mother nature. Whether in flood or not, the spectacle of the great Lake Eyre and its expanse of vast salt flats is breathtaking. Stay one night at the iconic Birdsville Hotel as we discover this quintessential frontier town and the Simpson Desert National Park. Join us for an incredible Outback discovery in Bill Peach Journeys' inimitable style.

ABOUT AIRCRUISING

An Air Tour is the perfect way to explore these hard to reach destinations in the style, speed and comfort of your own private aircraft. Travelling by private aircraft means that we can land directly in each location ensuring time on the ground is spent discovering each region. The style of aircraft is chosen to provide the best possible access into remote locations.

FULLY INCLUSIVE

When you travel on an Air Tour everything is included. This means not only does your holiday include accommodation, dining and all excursions but every one of these elements is the finest in its class. Throughout the journey you will have a Journey Director on hand to look after each detail.



DAY 1 | ARRIVE ADELAIDE

Arrive in Adelaide and transfer to the Mayfair Hotel, a luxurious 5-star boutique hotel. Your welcome dinner tonight will be hosted by your Journey Director.

Overnight: Mayfair Hotel or similar

DAY 2 | ADELAIDE - FLINDERS RANGES

We fly north to the Flinders Ranges enjoying spectacular aerial views of Wilpena Pound before landing at the magnificently located Rawnsley Park Station. After lunch at The Woolshed, we enjoy a tour of the Old Wilpena Station, one of South Australia's oldest and best preserved pastoral settlements learning about the region and its biodiversity.

Overnight: Rawnsley Park Station or similar

DAY 3 | FLINDERS RANGES

Today we explore more than 100 million years of geological history in the Ikara-Flinders Ranges National Park. Here we will discover the ancient landscape visible in the geological layers referred to as the 'Corridor Through Time'. Marvel at the rugged beauty of Brachina and Bunyerroo Gorges. Search for Yellow-footed Rock-wallabies and enjoy sweeping views of Bunyerroo Valley and the eastern wall of Wilpena Pound. After lunch, visit an old copper mining town before arriving at Hucks Lookout which offers a sweeping panorama of the eastern side of Wilpena Pound, Heysen Range and ABC Range.

Overnight: Rawnsley Park Station or similar

DAY 4 | FLINDERS RANGES - LAKE EYRE - BIRDSVILLE

A morning of impressive flightseeing awaits as we fly from Rawnsley Park to Leigh Creek then over the mysterious Marree Man[^]. We fly on to Lake Eyre South, Goyder Channel, Lake Eyre North, the Warburton River and Diamantina. Your private aircraft will provide breathtaking views of the remote landscape of Lake Eyre (Kati Thanda), a remarkable ecosystem, which covers an area of 9,690 square kilometres, or roughly the size of Holland. Marvel at incredible vistas below of regeneration, wildlife and salt flats.

Land at Birdsville and tour this remote outback destination. Proclaimed a town in 1887, it was located at the border of South Australia and Queensland to collect tolls from the droves of cattle being moved interstate. Birdsville is considered the gateway to the Simpson Desert. Known as Munga-Thirri National Park, it is Queensland's largest protected area and covers nearly a million hectares. See Birdsville's famous racecourse and visit 'Big Red', the largest sand dune in the national park, followed by dinner at the famous Birdsville Hotel.

Overnight: Birdsville Hotel

DAY 5 | BIRDSVILLE - PORT AUGUSTA - ADELAIDE

Fly south to Port Augusta today, a one time port at the top of the Spencer Gulf, where wheat and wool were loaded on clipper

ships and transported around the world. Today, it is known as the 'crossroads' to the outback, as its main roadways extend in all four compass directions. We visit the fascinating Wadlata Outback Centre for a history of the surrounding regions and those that have called them home, from the days of the dinosaurs through to today. Discover the beauty of Australia's arid heart at the Australian Arid Lands Botanic Garden, which features thousands of plants from Australia's low rainfall regions and more than 150 bird species. After lunch, we fly to Adelaide and enjoy a farewell dinner this evening.

Overnight: Mayfair Hotel or similar

DAY 6 | DEPART ADELAIDE

Transfer to Adelaide Airport after breakfast for your flight home. Say a fond farewell to new friends and take away memories of an unforgettable outback adventure.



*Conditions Apply: The \$750 per person Early Bird Offer cannot be used in conjunction with any other offer. Valid if booked and paid by 20 Dec, 2024 (Jun Departure) & 28 Feb, 2025 (July Departure). [^]Weather Permitting. Please contact Bill Peach Journeys or your local travel agent for assistance with airfares to meet this Air Tour.

Call our Reservations Team on 1800 252 053 (Australia), 0800 445 700 (New Zealand)

email info@billpeachjourneys.com.au or visit www.billpeachjourneys.com.au

www.facebook.com/BillPeachJourneys

Bill Peach Journeys Pty Ltd. ABN 11 054 959 152. Travel Agents Licence Number 2TA 003 547

